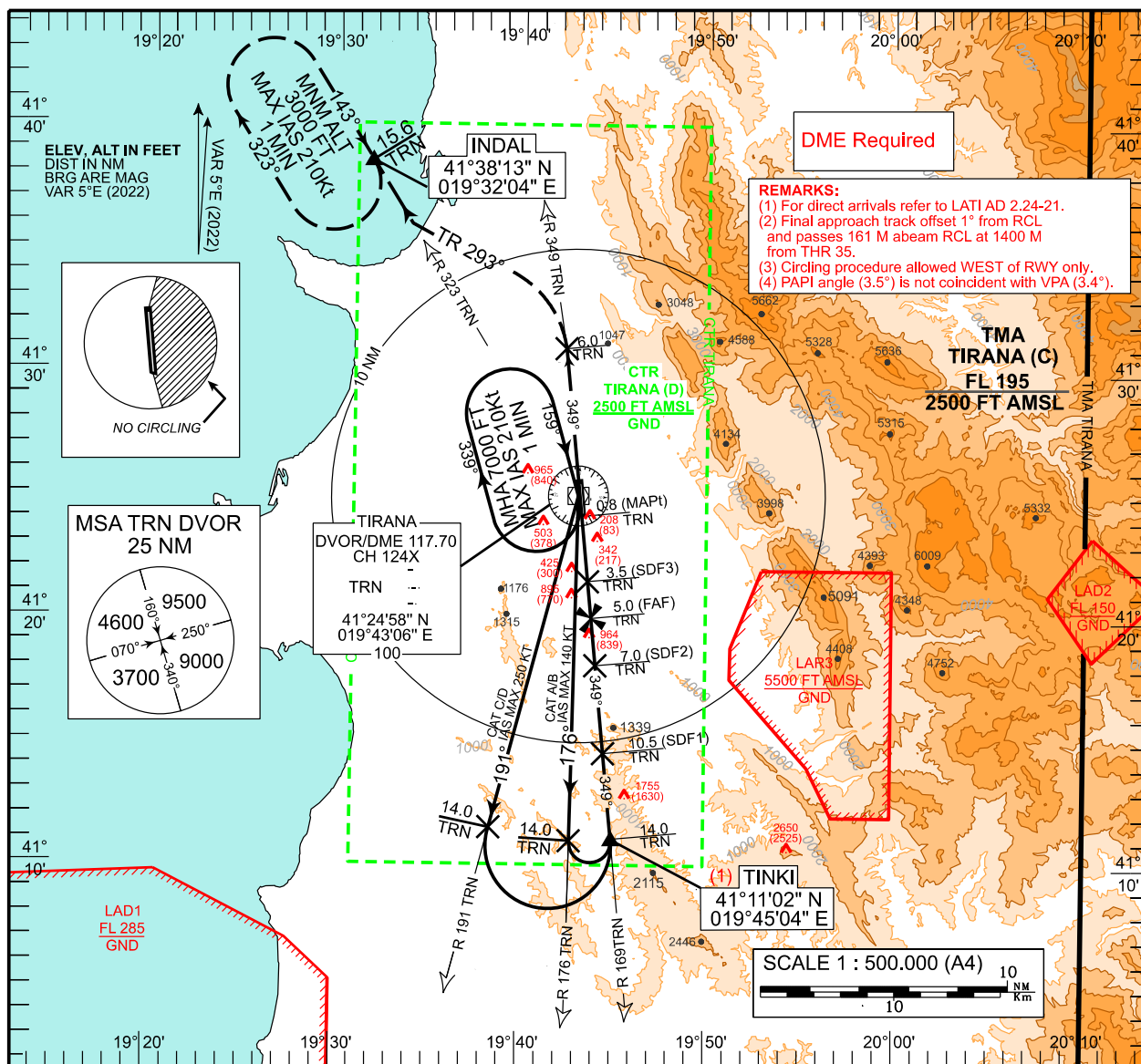


**AERODROME ELEVATION 125 FT**  
**HEIGHTS RELATED TO**  
**THR RWY 35 - ELEV 125 FT**

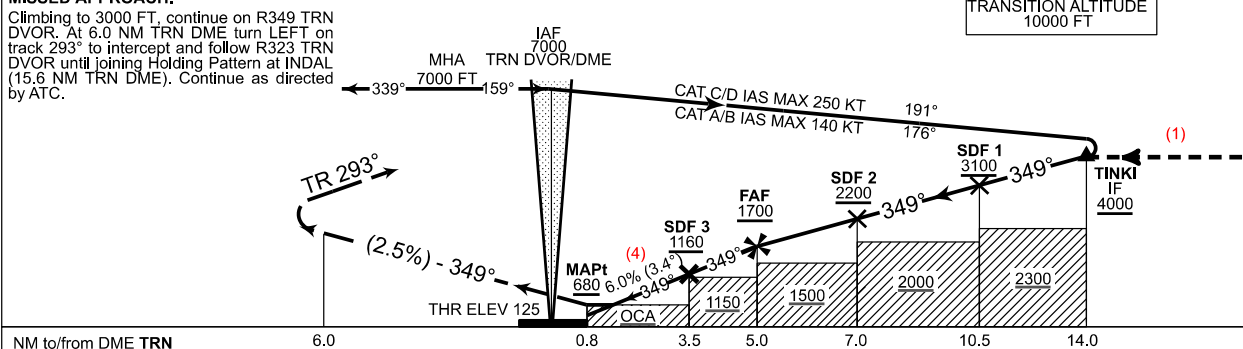
		ATIS	132.275		
TWR	122.500	APP	133.150	ACC	127.500
	123.500		136.350		136.350

DOC. 8168 VOL II - ED.7 - 2020



CHANGE: REMARK ON PAPI MODIFIED.

Climbing to 3000 FT, continue on R349 TRN DVOR. At 6.0 NM TRN DME turn LEFT on track 293° to intercept and follow R323 TRN DVOR until joining Holding Pattern at INDAL (15.6 NM TRN DME). Continue as directed by ATC.



										TRN DME DIST (NM)		NM	5.0	4.0	3.5	3.0
										ALT (HGT)	3.4° APCH	FT	1700 (1575)	1345 (1220)	1160 (1035)	980 (855)

OCA / H		A	B	C	D	NOMINAL DESCENT	KT	90	120	140	160	180
STRAIGHT IN APPROACH	FT	680 (555)				FAF to THR 35 (4.2 NM)	MIN:S	2:48	2:06	1:48	1:35	1:24
CIRCLING (3)	FT	870 (745)	1270 (1145)	1480 (1355)	1750 (1625)	RATE OF DESCENT/GS	FT/MIN	550	730	850	975	1095

THIS PAGE INTENTIONALLY LEFT BLANK